

Local Evaluation Overview and Preliminary Findings

Diane Schilder, EdD

**Biology 2 - Ecology, Evolution, and the Diversity of Life
Summer 2012**

Overview of Evaluation

Purpose of the evaluation:

- Document impact of project on teachers and students.
 - *Note: Evaluation is focused on the project and not individual teachers or students*
- Collect and report data about project activities so leaders can improve activities.
- Report findings to State Department of Elementary and Secondary Education, TRITEC and participating districts.

Evaluation Plan

Methods:

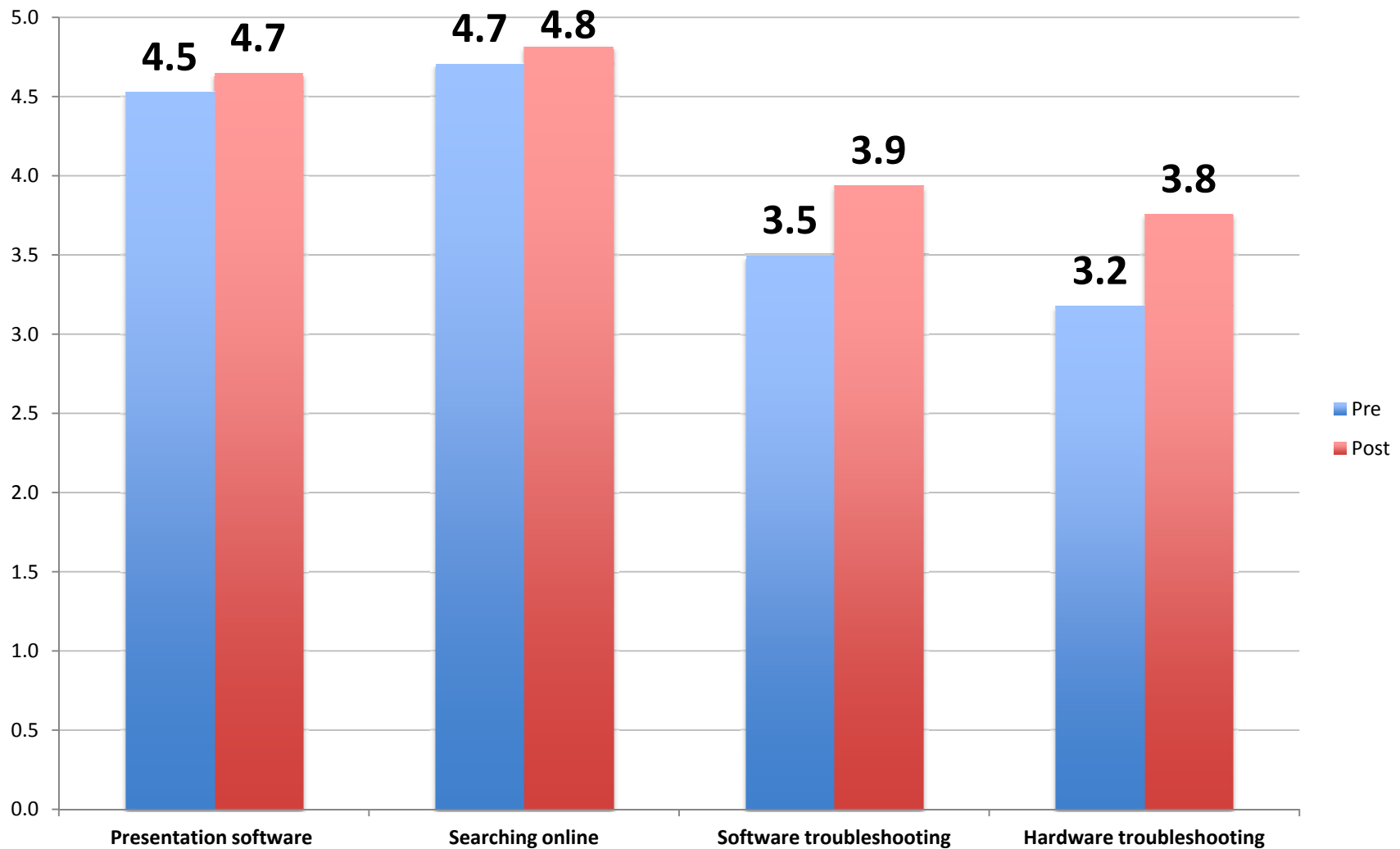
- Participate in regular project-related meetings and events
- Survey of participating and comparison teachers
- Assess teacher content knowledge and pedagogical approaches (pre and post)
- Observe a sample of teachers' classrooms and project activities
- Obtain from teachers data from student assessments (own students and comparison classrooms of students)

Teacher/Participant Data Critical for Project Funding

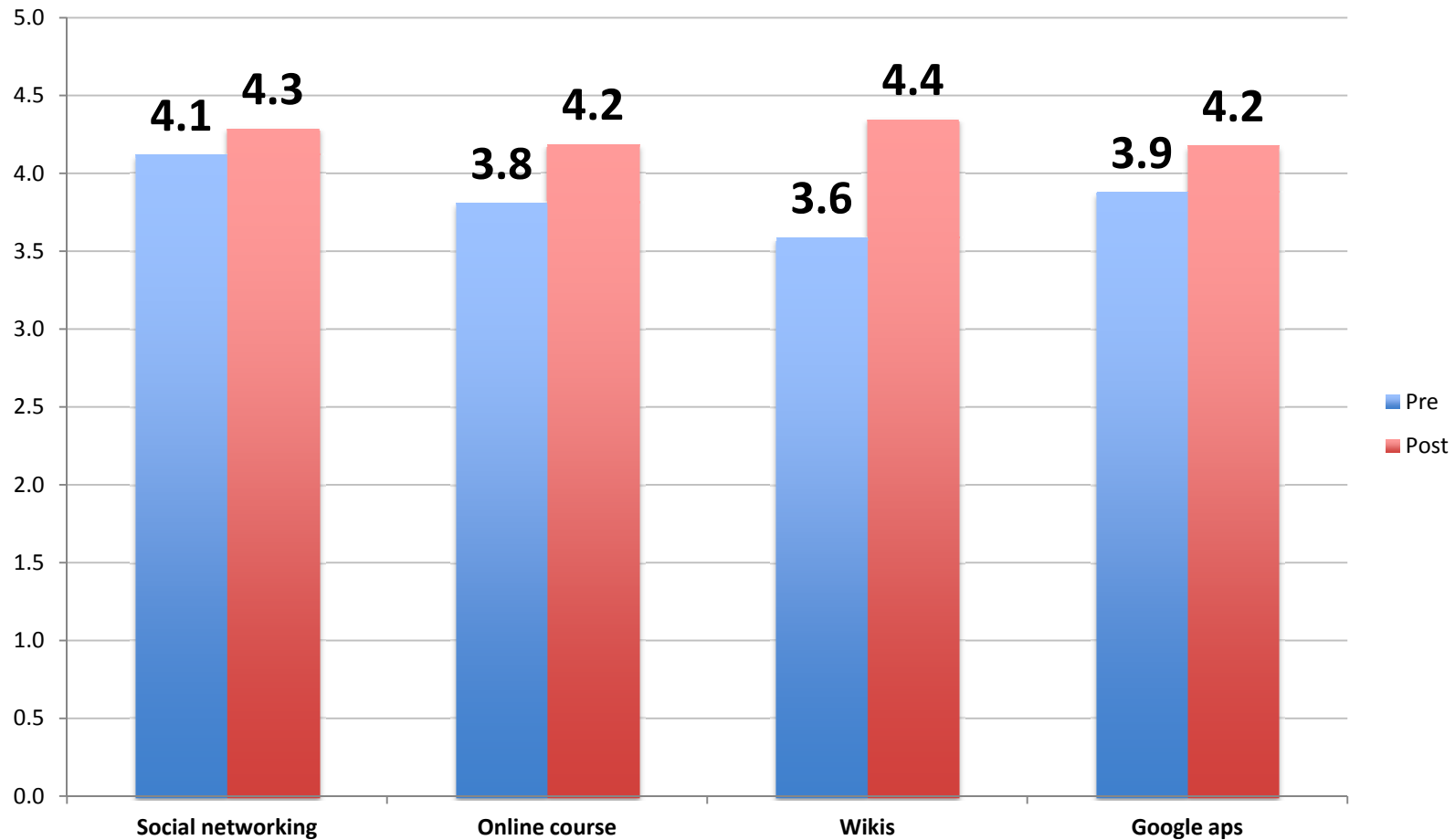
- To receive funding from the state, each project is required to collect survey data from all participants
- Teachers who volunteer to be observed will receive a \$5 Target Gift card
- Teachers who are student assessment data receive \$25 Target Gift card (own students and comparison classrooms of students)
- Comparison teachers who complete online survey receive \$5 Target Gift card

Preliminary Findings

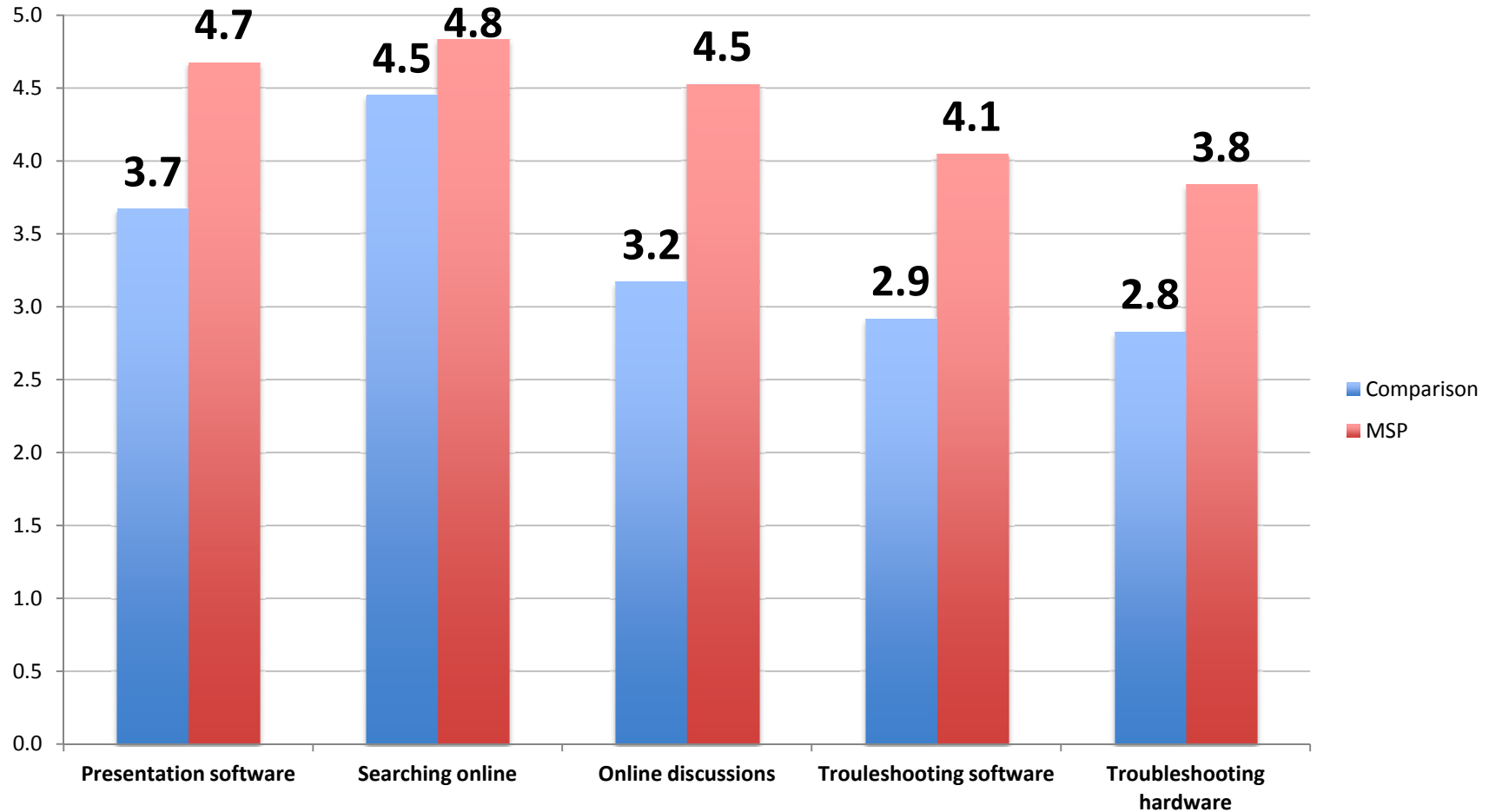
Knowledge of Technology Increased



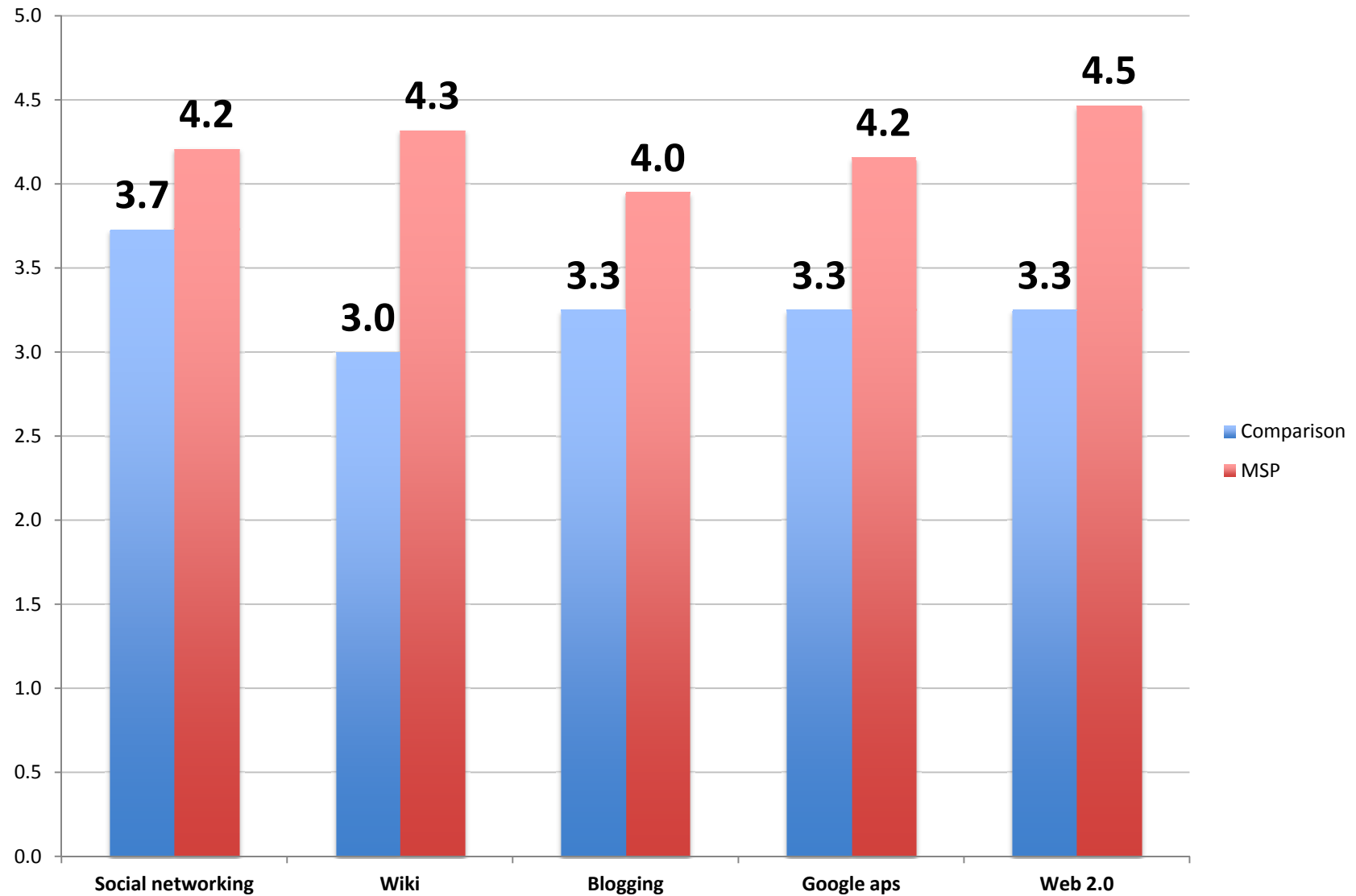
Knowledge of Web 2.0 Increased



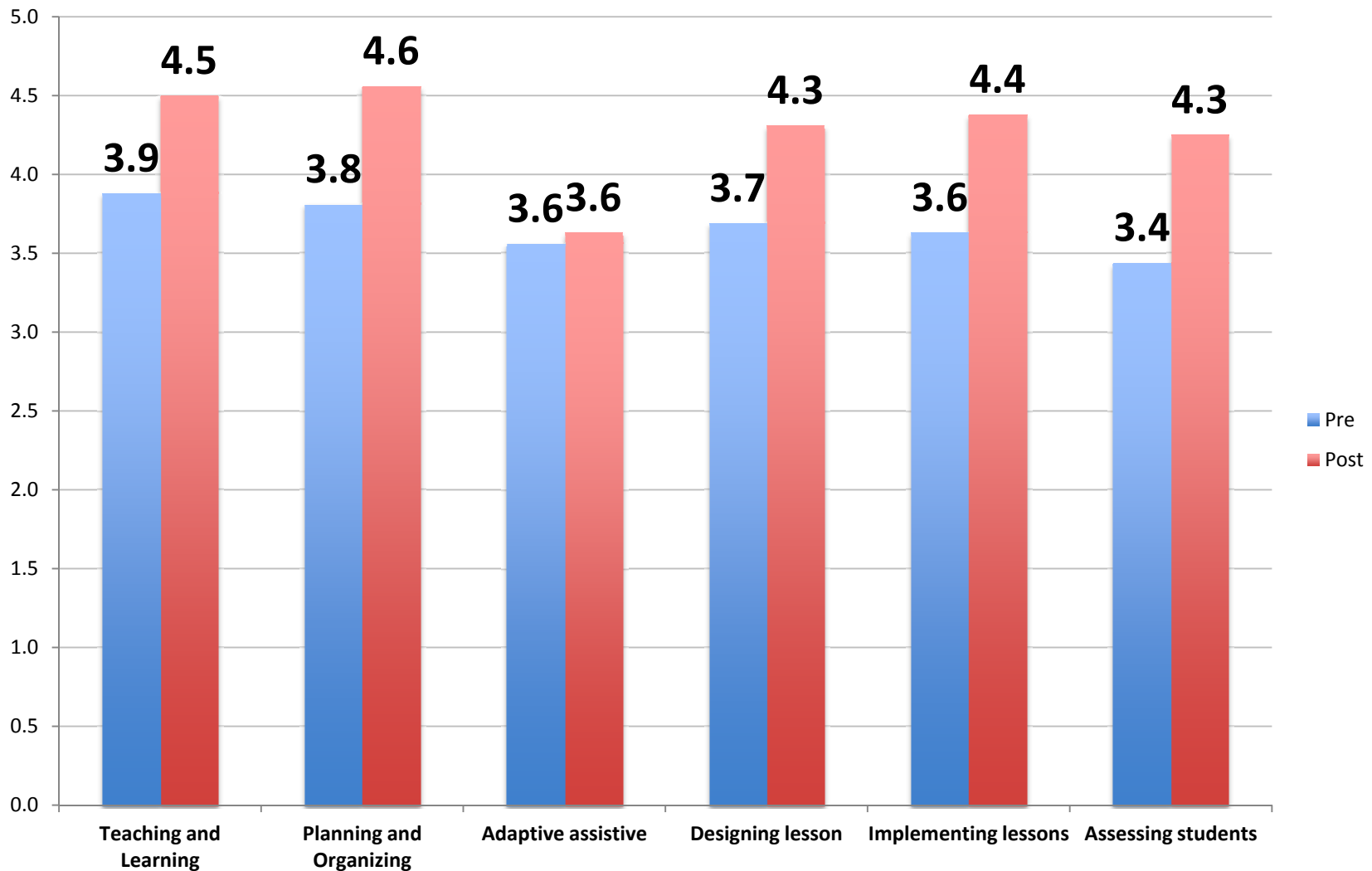
Participants More Confident About Technology Than Comparison Teachers



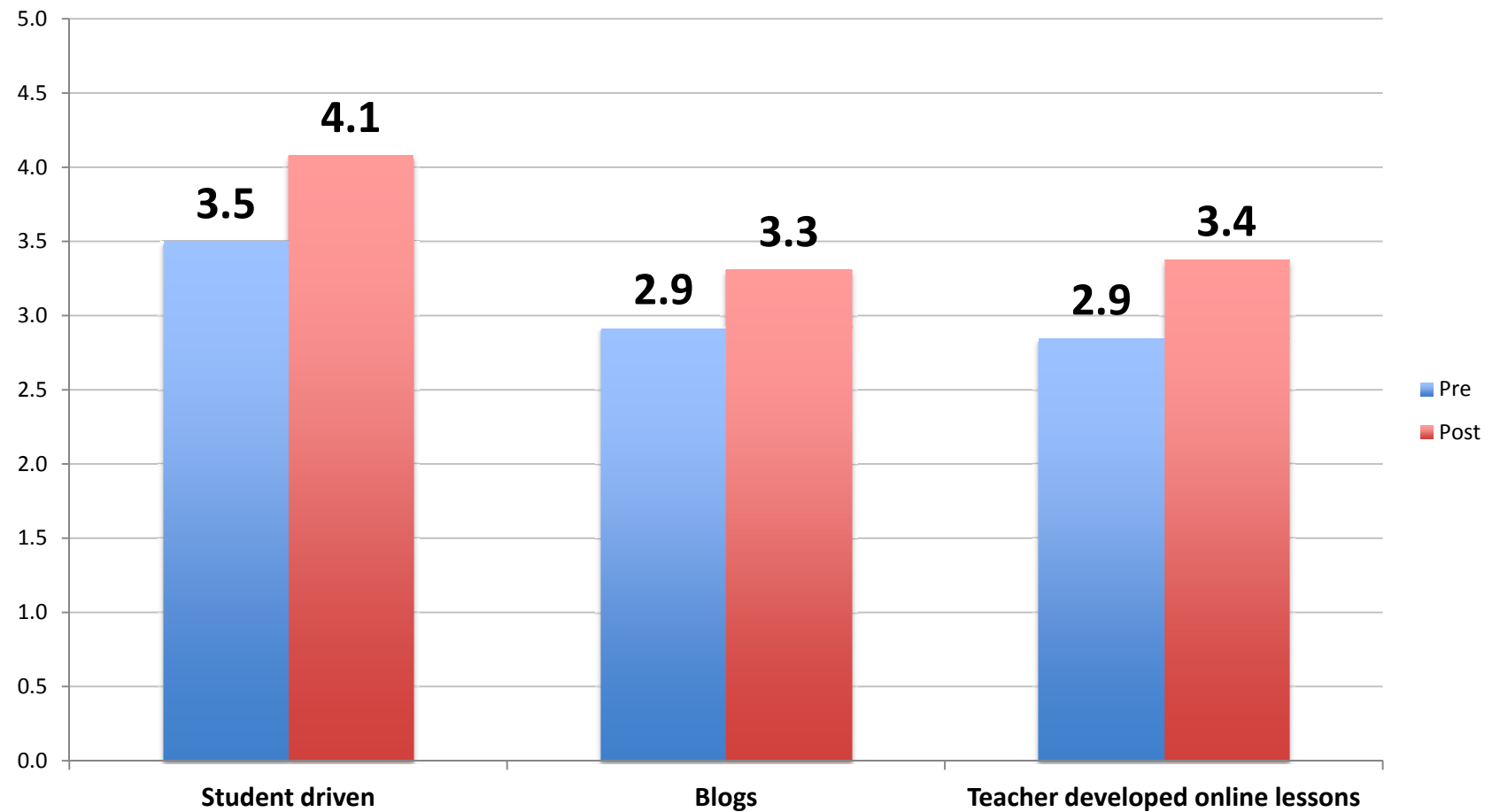
Participants More Confident About Web 2.0 Than Comparison Teachers



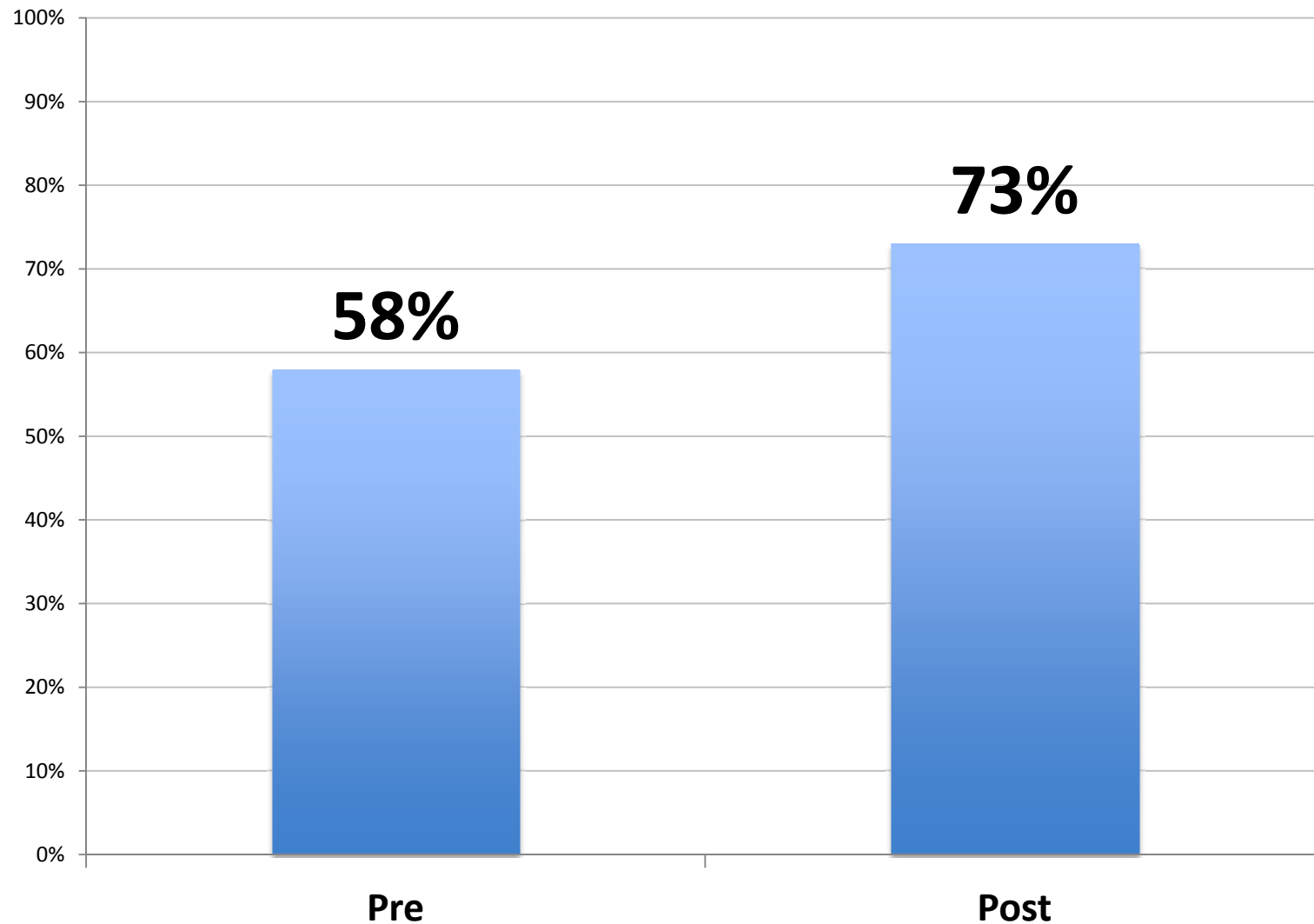
Confidence Using Technology for Teaching and Learning Increased



Some Changes in Teaching Practices Reported



Teacher Content Knowledge Increased



Some Teachers Reported Specific Knowledge Gains

I am able to explain classification better and have acquired resources that will make my teaching better on this topic.

[Middle school teacher from Biology course, high-needs district]

I learned a lot about how a species works to promote reproduction. I have a better understanding of how invasive species alter the environment. [Elementary school teacher from Biology course, high-needs district]

Some Teachers Reported Gains in Knowledge of Web 2.0

This class enabled me to break the habit of only pen and paper or poster presentations and allow students to complete projects with digital tools of their choice. As much as I was a little afraid of trying something new and how to assess the project... it ended up working great. I am glad I took this class to get the confidence and skills to incorporate Web 2.0 into my classes.

Recommendations

- Offer an opportunity for teachers to practice lesson implementation prior to teaching in their own classes
- Offer more differentiated instruction to ensure rigorous content is covered
- Ensure faculty model inquiry-based pedagogical techniques

Next Steps

- Continue to observe sample of classrooms.
Volunteers get Target Gift Card as Thank you
- Collect data from comparison teachers
Comparison teachers get \$5 Target Gift Card. Please share link with teachers.
<https://www.surveymonkey.com/s/TritecMSP2012>
- Analyze data and submit reports to the Department of Elementary and Secondary Education.
- Provide formative feedback to project leaders to inform improvements in subsequent courses.

Your Next Steps

- Contact me at dschilder@eval-inc.com or 617-816-2026 to schedule observation
- Send me an example lesson plan PRIOR to your participation so I can compare with lesson you developed for the course.
- Share student assessment data with me by sending summary by email or sending to me at:

Diane Schilder
EAS, Inc.
1 Mifflin Place, Suite 400
Cambridge, MA 02138

- Notify the TLCD's of the date and time you will be implementing your lesson.